

U. S. ARMY  
CORPS OF ENGINEERS  
NEW YORK DISTRICT

**OCEAN SURVEYS, INC.**  
AN AMERICAN SURVEYING CORPORATION  
400 EASTERN AVENUE  
NEW YORK, NY 10002-3000

REG. NO. 47 FILE NO. 1 5067

DATE: 2 SEPTEMBER 2021

APPROVED: J. TYLER  
FIELD SUPERVISOR  
APPROVED: M. EDBIE  
FIELD WORKER  
APPROVED: P. BISHOP  
CONSULTANT  
APPROVED: J. MAZ  
SHIFT CHIEF OF PARTY

DEPARTMENT OF THE ARMY  
CORPS OF ENGINEERS  
NEW YORK, NEW YORK 10278

OPERATIONS DIVISION  
SURVEY SECTION  
CEMAG-OS

PORT JEFFERSON HARBOR  
NEW YORK  
CONDITION SURVEY

VH-101  
SHEET 1 OF 4

REG. NO. FILE NO.: 5067

DATES OF SURVEY:  
15-18 JULY 2021

SCALE:  
1 INCH = 100 FEET

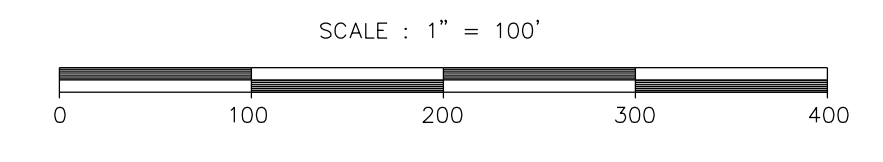
FIELD BOOKS:  
ZLESZDE

GREEN BEACON LIGHTED  
RED #2 LIGHTED W/BELL  
RED DAY BEACON '24' W/LIGHT

NOTES:

- GRID SYSTEM IS IN FEET AND IS THE NEW YORK LONG ISLAND STATE PLANE COORDINATE SYSTEM, NAD83.
- DEPTHS ARE IN FEET AND ARE REFERENCED TO MEAN LOWER LOW WATER (MLLW).
- THE PLANE OF MEAN LOWER LOW WATER (MLW) IS 3.7 FEET BELOW NAVD 88. THIS VALUE WAS DETERMINED USING NDA'S VDATUM MODEL (VERSION 4.1.21).
- SOUNDINGS DEPICTED ON THIS MAP ARE BASED ON A 3' X 3' MEDIAN CELL, SORTED TO A 25' INTERVAL.
- CONTOURS ON THIS MAP WERE GENERATED USING THE 3' X 3' DATA SET.
- SHORELINE AND ONSHORE FEATURES ARE APPROXIMATE AND WERE TAKEN FROM DIGITAL ORTHOPHOTO QUADRANGLES FLOWN IN 2020 AND OBTAINED FROM THE NEW YORK STATE GIS CLEARINGHOUSE (NYS GIS).
- THE PLANIMETRICS AND ORTHOPHOTOS SHOWN ON THIS MAP ARE FOR ORIENTATION PURPOSES ONLY.
- THE DATA DEPICTED ON THIS MAP ARE REPRESENTATIVE OF A LARGER DATA SET.
- THE SOUNDINGS ON THIS MAP MEET EM 1110-2-1003 ACCURACY STANDARDS.
- THIS MAP IS CEPD COMPLIANT IN ACCORDANCE WITH ER 1110-2-8160 AND EM 1110-2-6056.
- THE SURVEY SHOWN WAS CONDUCTED BY OCEAN SURVEYS, INC. USING THE FOLLOWING:  
SURVEY VESSEL: R/V OSPREY  
ECHOSOUNDER: RESON SEABAT 750  
NAVIGATION SYSTEM: APPLANIX POSMV IN REAL TIME KINEMATIC (RTK) MODE  
SURVEY ACQUISITION SOFTWARE: HYPACK  
SURVEY PROCESSING SOFTWARE: HYPACK
- THE INFORMATION PRESENTED ON THIS DRAWING REPRESENTS THE RESULTS OF A SURVEY PERFORMED BY OCEAN SURVEYS, INC. (OSI) 15-18 JULY 2021 AND CAN ONLY BE CONSIDERED AS INDICATING THE CONDITIONS EXISTING AT THAT TIME. REUSE OF THIS INFORMATION BY CLIENT OR OTHERS BEYOND THE SPECIFIC SCOPE OF WORK FOR WHICH IT WAS ACQUIRED SHALL BE AT THE SOLE RISK OF THE USER AND WITHOUT LIABILITY TO OSI.

NSRS CONTROL DATA	
BENCHMARK: TIDAL 2 STA #20 (KU0505)	ELEVATION: 12.64' NAVD 88
LOCAL CONTROL DATA	
BENCHMARK: 4560 M 1990	ELEVATION: 13.27' NAVD 88





US ARMY CORPS OF ENGINEERS  
NEW YORK DISTRICT

OCEAN SURVEYS, INC.  
AN AMERICAN CORPORATION  
400 EASTERN AVENUE  
NEW YORK, NY 10010  
www.osurveys.com



REG NO./FILE NO.: 5067

REG NO./FILE NO.: 5067

REG NO./FILE NO.: 5067

REG NO./FILE NO.: 5067

REG NO./FILE NO.: 5067

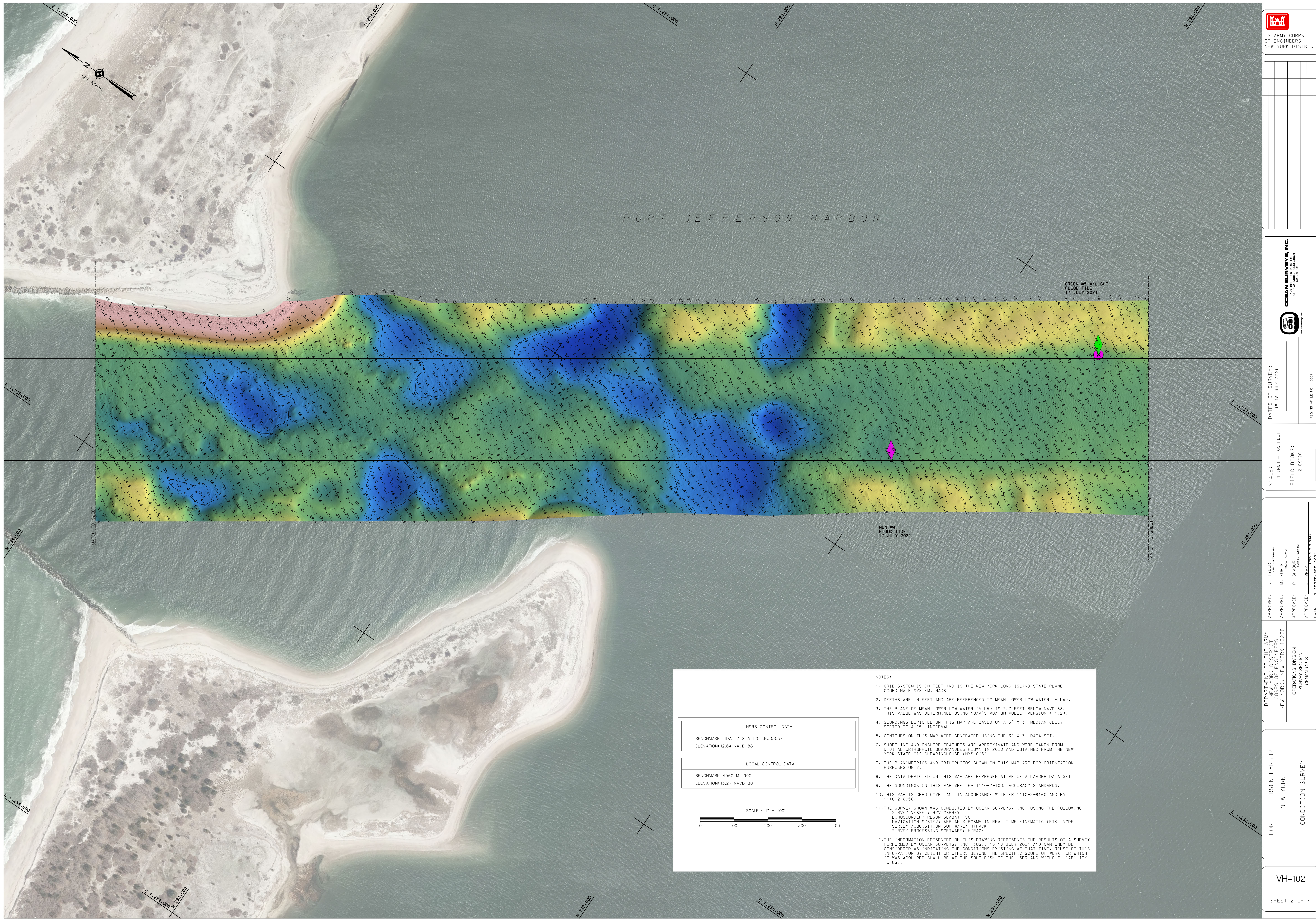
REG NO./FILE NO.: 5067

REG NO./FILE NO.: 5067

REG NO./FILE NO.: 5067

REG NO./FILE NO.: 5067

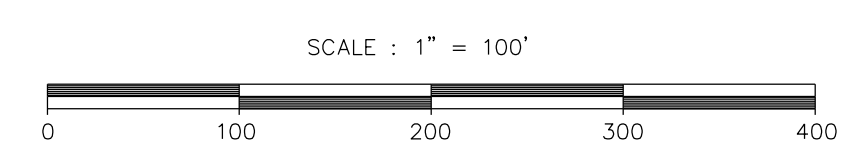
REG NO./FILE NO.: 5067



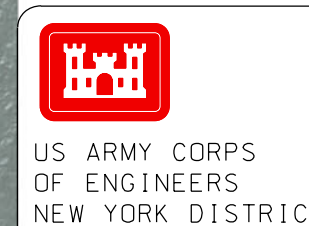
GREEN #5 W/LIGHT  
FLOOD TIDE  
17 JULY 2021

NUN #4  
FLOOD TIDE  
17 JULY 2021

NSRS CONTROL DATA	
BENCHMARK: TIDAL 2 STA #20 (KU0505)	ELEVATION: 12.64' NAVD 88
LOCAL CONTROL DATA	
BENCHMARK: 4560 M 1990	ELEVATION: 13.27' NAVD 88



- NOTES:
1. GRID SYSTEM IS IN FEET AND IS THE NEW YORK LONG ISLAND STATE PLANE COORDINATE SYSTEM, NAD83.
  2. DEPTHS ARE IN FEET AND ARE REFERENCED TO MEAN LOWER LOW WATER (MLLW).
  3. THE PLANE OF MEAN LOWER LOW WATER (MLLW) IS 3.7 FEET BELOW NAVD 88. THIS VALUE WAS DETERMINED USING NOAA'S VDATUM MODEL (VERSION 4.1.21).
  4. SOUNDINGS DEPICTED ON THIS MAP ARE BASED ON A 3' X 3' MEDIAN CELL, SORTED TO A 25' INTERVAL.
  5. CONTOURS ON THIS MAP WERE GENERATED USING THE 3' X 3' DATA SET.
  6. SHORELINE AND ONSHORE FEATURES ARE APPROXIMATE AND WERE TAKEN FROM DIGITAL ORTHOPHOTO QUADRANGLES FLOWN IN 2020 AND OBTAINED FROM THE NEW YORK STATE GIS CLEARINGHOUSE (NYSGIS).
  7. THE PLANIMETRICS AND ORTHOPHOTOS SHOWN ON THIS MAP ARE FOR ORIENTATION PURPOSES ONLY.
  8. THE DATA DEPICTED ON THIS MAP ARE REPRESENTATIVE OF A LARGER DATA SET.
  9. THE SOUNDINGS ON THIS MAP MEET EM 1110-2-1003 ACCURACY STANDARDS.
  10. THIS MAP IS CEPD COMPLIANT IN ACCORDANCE WITH ER 1110-2-8160 AND EM 1110-2-6056.
  11. THE SURVEY SHOWN WAS CONDUCTED BY OCEAN SURVEYS, INC. USING THE FOLLOWING:  
SURVEY VESSEL: R/V OSPREY  
ECHOSOUNDER: RESON SEABAT T50  
NAVIGATION SYSTEM: APPLANIX POSMV IN REAL TIME KINEMATIC (RTK) MODE  
SURVEY ACQUISITION SOFTWARE: HYPACK  
SURVEY PROCESSING SOFTWARE: HYPACK
  12. THE INFORMATION PRESENTED ON THIS DRAWING REPRESENTS THE RESULTS OF A SURVEY PERFORMED BY OCEAN SURVEYS, INC. (OSI) 15-18 JULY 2021 AND CAN ONLY BE CONSIDERED AS INDICATING THE CONDITIONS EXISTING AT THAT TIME. REUSE OF THIS INFORMATION BY CLIENT OR OTHERS BEYOND THE SPECIFIC SCOPE OF WORK FOR WHICH IT WAS ACQUIRED SHALL BE AT THE SOLE RISK OF THE USER AND WITHOUT LIABILITY TO OSI.



US ARMY CORPS OF ENGINEERS NEW YORK DISTRICT

PORT JEFFERSON HARBOR

Empty table grid with 4 columns and 10 rows



DATES OF SURVEY: 15-18 JULY 2021

SCALE: 1" = 100 FEET

FIELD BOOKS: ZLESZB

APPROVED: J. TYLER FIELD SUPERVISOR

APPROVED: M. EDRIE PROJECT MANAGER

APPROVED: P. BISHOP/III CONTRACTOR

APPROVED: J. WAZ SURVEY CHIEF IN CHARGE

DATE: 2 SEPTEMBER 2021

DEPARTMENT OF THE ARMY CORPS OF ENGINEERS NEW YORK

OPERATIONS DIVISION SURVEY SECTION

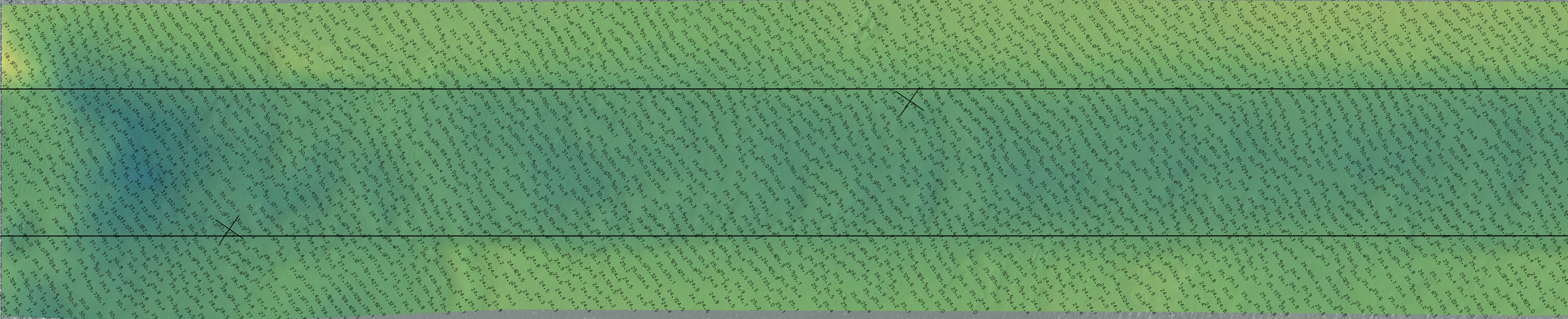
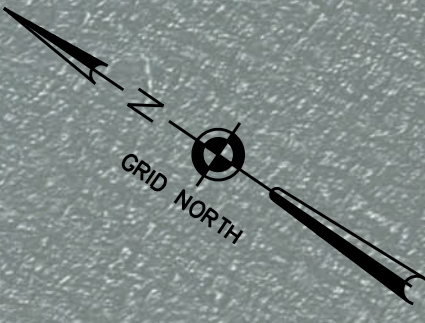
PORT JEFFERSON HARBOR NEW YORK

CONDITION SURVEY

VH-103

SHEET 3 OF 4

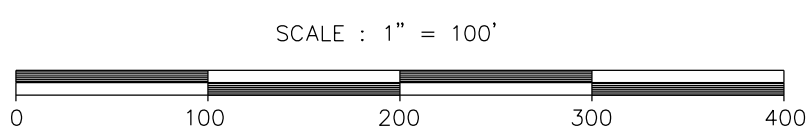
REG NO. / FILE NO.: 5067



**NOTES:**

1. GRID SYSTEM IS IN FEET AND IS THE NEW YORK LONG ISLAND STATE PLANE COORDINATE SYSTEM, NAD83.
2. DEPTHS ARE IN FEET AND ARE REFERENCED TO MEAN LOWER LOW WATER (MLLW).
3. THE PLANE OF MEAN LOWER LOW WATER (MLLW) IS 3.7 FEET BELOW NAVD 88. THIS VALUE WAS DETERMINED USING NOAA'S VDATUM MODEL (VERSION 4.1.2).
4. SOUNDINGS DEPICTED ON THIS MAP ARE BASED ON A 3' X 3' MEDIAN CELL, SORTED TO A 25' INTERVAL.
5. CONTOURS ON THIS MAP WERE GENERATED USING THE 3' X 3' DATA SET.
6. SHORELINE AND ONSHORE FEATURES ARE APPROXIMATE AND WERE TAKEN FROM DIGITAL ORTHOPHOTO QUADRANGLES FLOWN IN 2020 AND OBTAINED FROM THE NEW YORK STATE GIS CLEARINGHOUSE (NYS GIS).
7. THE PLANIMETRICS AND ORTHOPHOTOS SHOWN ON THIS MAP ARE FOR ORIENTATION PURPOSES ONLY.
8. THE DATA DEPICTED ON THIS MAP ARE REPRESENTATIVE OF A LARGER DATA SET.
9. THE SOUNDINGS ON THIS MAP MEET EM 1110-2-1003 ACCURACY STANDARDS.
10. THIS MAP IS CEPD COMPLIANT IN ACCORDANCE WITH ER 1110-2-8160 AND EM 1110-2-6056.
11. THE SURVEY SHOWN WAS CONDUCTED BY OCEAN SURVEYS, INC. USING THE FOLLOWING:  
SURVEY VESSEL: R/V DSPREY  
ECHOSOUNDER: RESON SEABAT 150  
NAVIGATION SYSTEM: APPLANIX POSMV IN REAL TIME KINEMATIC (RTK) MODE  
SURVEY ACQUISITION SOFTWARE: HYPACK  
SURVEY PROCESSING SOFTWARE: HYPACK
12. THE INFORMATION PRESENTED ON THIS DRAWING REPRESENTS THE RESULTS OF A SURVEY PERFORMED BY OCEAN SURVEYS, INC. (OSI) 15-18 JULY 2021 AND CAN ONLY BE CONSIDERED AS INDICATING THE CONDITIONS EXISTING AT THAT TIME. REUSE OF THIS INFORMATION BY CLIENT OR OTHERS BEYOND THE SPECIFIC SCOPE OF WORK FOR WHICH IT WAS ACQUIRED SHALL BE AT THE SOLE RISK OF THE USER AND WITHOUT LIABILITY TO OSI.

NSRS CONTROL DATA	
BENCHMARK: TIDAL 2 STA #20 (KU0505)	
ELEVATION: 12.64' NAVD 88	
LOCAL CONTROL DATA	
BENCHMARK: 4560 M 1990	
ELEVATION: 13.27' NAVD 88	



E 1,235,000

M 280,000

M 280,000

E 1,237,000

E 1,236,000

M 281,000

E 1,236,000

M 280,000

